

Registration Information



In partnership with



ARIZONA
ASSOCIATION FOR
ENVIRONMENTAL
EDUCATION

51st Annual Conference

OCT. 12-15

19th Annual Research Symposium

OCT. 11-12

TUCSON2022

IN-PERSON WITH VIRTUAL OPTIONS



EDUCATING FOR CHANGE

Education We Need for the World We Want

Join us for our return to an in-person gathering in beautiful Tucson or participate online with our virtual program. NAAEE's 2022 conference will focus on the powerful role education can play in creating healthier communities and tackling today's complex environmental and social issues. We'll dig into vital topics in our field, such as climate change education and climate justice, the benefits of connecting to nature, building a green workforce, protecting biodiversity, and centering equity in our work.

We'll explore creative new approaches that have emerged from the pandemic and delve into ways in which current research can increase our effectiveness as we work to transform communities so they are more just and sustainable.

The Annual Conference and Research Symposium will offer inspiring and thoughtful keynotes, a rich variety of workshops, symposia, traditional sessions, research panels, roundtable discussions, bright spots, and posters, along with great opportunities for networking, growth, and change.

For details and registration information: conference.naaee.org



Arizona does not observe Daylight Saving Time and will be on **Mountain Standard Time (equivalent to Pacific Daylight Time)** during the Annual Conference and Research Symposium.

Schedule at a Glance

In-Person Program in Tucson

Annual Conference and Research Symposium

Monday, October 10

- Research Symposium Field Trip*
- Research Networking Dinner*

Tuesday, October 11

- Research Symposium*
- Symposium Opening Plenary: Dr. Alberto Arenas
- Symposium Keynote: Dr. Viniece Jennings
- Symposium recruitment fair and reception

Wednesday, October 12

- Research Symposium continues
- Symposium grad student mentoring breakfast
- Pre-conference workshops* (full-day and half-day)
- Pre-conference field trips*
- Opening reception, including Share Fair, Authors' Corner, and Exhibit Fair (starts at 5:00 PM)
- Conference opening, featuring Lifetime Achievement Award recipient Julie Packard

Thursday, October 13

- Concurrent sessions
- Keynote: Dr. Robin Wall Kimmerer
- Exhibit Fair luncheon
- Poster Session
- Evaluation Clinic
- Free night: Enjoy Tucson

Friday, October 14

- Concurrent sessions
- Keynote: Leander Lacy
- eePRO Groups brown bag lunch meetings
- Closing night celebration at Tohono Chul Gardens and Galleries

Saturday, October 15

- Concurrent sessions
- Awards luncheon
- Closing plenary: Flash Talks! *Educating for Change*

*Requires separate registration fee



In-Person Registration

In-person Annual Conference registration includes:

- All conference plenary and concurrent sessions
- Access to all on-demand and live virtual sessions
- Wednesday opening reception, Thursday exhibit luncheon, Friday Chillin' at the Chul, Saturday awards luncheon
- Exhibit Hall entry and access to all virtual exhibits

In-person Research Symposium registration includes:

- All symposium plenary and concurrent sessions
- Access to all on-demand and live virtual sessions
- Tuesday and Wednesday luncheons, Tuesday reception and recruitment fair, Wednesday grad student and mentoring breakfast

Virtual Registration

Virtual registration for either event includes:

- Live stream of all plenary sessions
- Access to all on-demand virtual sessions
- Access to a limited program of live virtual sessions (offered concurrently with the in-person programs)

All virtual session recordings will be available through April 15, 2023.

Choose from a wide variety of concurrent sessions in six strands:

- Advancing Civic Engagement and Sustainable Communities
- Building Leadership for Environmental Literacy
- Connecting with Nature
- Conservation and Environmental Education
- Green Schools, Universities, and Vocational Institutions
- Linking Research and Practice to Increase Impact



51st Annual Conference

OCT. 12-15



Featured Speakers

All featured speakers will be live-streamed and accessible to both in-person and virtual conference participants. Plenary sessions will be recorded and available for on-demand viewing for two weeks after the presentation.

Watch our website for additional plenary speakers.

Wednesday, October 12, 6:30 PM MST



Julie Packard

Monterey Bay Aquarium
2022 NAAEE Lifetime Achievement
Award Recipient

Julie Packard is executive director of the acclaimed Monterey Bay Aquarium, which she helped found in the late 1970s as the

nation's first major public aquarium dedicated to interpreting marine life of a single region. Under her leadership, the aquarium has pioneered innovative exhibits and education initiatives, and has evolved into one of the nation's leading ocean conservation organizations. Julie is an international leader in the field of ocean conservation and a leading voice for science-based policy reform in support of healthy oceans. She is equally a strong advocate for advancing equity and diversity in the sciences, including endowment of scholarships that support individuals from historically marginalized communities and aquarium programs that help young women develop confidence and identity in the sciences. She has won numerous national and international awards and is a trustee of the David and Lucile Packard Foundation and chairs the board of the independent Monterey Bay Aquarium Research Institute.

Julie Packard's remarks will be presented virtually during the in-person opening ceremony.



Mayor Regina Romero (invited)

Raised by immigrant farm-workers in Somerton, Arizona, Regina is the youngest of six children and began breaking barriers early on as the first member of her family to vote and the first to graduate from college. She is a proud graduate of the University of Arizona

and holds a post-graduate certificate from the Harvard Kennedy School of Government.

In 2007, Regina became the first woman to represent Tucson's Ward 1 on the Tucson City Council. She has proven herself to be a champion for issues such as acting boldly on climate change, affordable housing, infrastructure investment, immigrant and workers' rights, and access to a high-quality education. In November, 2019 Regina was elected Tucson mayor, becoming the first woman and first Latina mayor of Tucson, as well as the only Latina mayor in the 50 largest U.S. cities.

**WE'RE BACK!
IN PERSON
IN TUCSON**



**Just a few of our outstanding
plenary speakers!**



Julie Packard



Mayor Regina Romero



Dr. Robin Wall Kimmerer



Leander Lacy



Dr. Viniece Jennings



Dr. Alberto Arenas

50th Annual Conference | October 12–15, 2022

Thursday, October 13, 11:30 AM MST



Dr. Robin Wall Kimmerer

State University of New York College of Environmental Science and Forestry

Robin Wall Kimmerer is a mother, scientist, decorated professor, and enrolled member of the Citizen Potawatomi Nation. She is the author of *Braiding Sweetgrass: Indigenous*

Wisdom, Scientific Knowledge and the Teachings of Plants, which has earned Kimmerer wide acclaim. Her first book, *Gathering Moss: A Natural and Cultural History of Mosses*, was awarded the John Burroughs Medal for outstanding nature writing, and her other work has appeared in *Orion*, *Whole Terrain*, and numerous scientific journals. She tours widely and has been featured on NPR's *On Being* with Krista Tippett and, in 2015, addressed the general assembly of the United Nations on the topic of "Healing Our Relationship with Nature." Kimmerer lives in Syracuse, New York, where she is a SUNY Distinguished Teaching Professor of Environmental Biology and the founder and director of the Center for Native Peoples and the Environment. The center's mission is to create programs that draw on the wisdom of both indigenous and scientific knowledge for our shared goals of sustainability.

As a writer and a scientist, her interests include not only restoration of ecological communities, but restoration of our relationships to land. She holds a BS in botany from SUNY ESF, and an MS and PhD in botany from the University of Wisconsin. Kimmerer is the author of numerous scientific papers on plant ecology, bryophyte ecology, traditional knowledge, and restoration ecology. She lives on an old farm in upstate New York, tending gardens both cultivated and wild.

This keynote will be presented virtually.

Friday, October 14, 11:30 AM MST



Leander Lacy

Lacy Consulting Services, LLC,
Denver, Colorado;
Rowan University, Glassboro, New Jersey

Leander Lacy is the founder and owner of Lacy Consulting Services. His company focuses on helping environmental

organizations and sustainability-minded businesses meet their goals of improving human and community well-being through conservation action. Leander has worked on projects such as dam removal; deer management; building trust between fishers

and conservation groups; a five-state collaborative to protect the U.S. shortgrass prairie; assessing discrimination in U.S. farming and ranching; and assisting the states of Kansas and Maryland in their efforts to ensure that justice, equity, diversity, and inclusion (JEDI) are core to their strategy for statewide environmental education. Leander is trained traditionally as a wildlife ecologist and received his MS in human dimensions of natural resources with thesis work on how to improve the quality of life of the urban poor through environmental action. Before starting his company, he worked on global teams with The Nature Conservancy, and he has been an advocate for increased social science and JEDI in conservation projects.

Saturday, October 15, 12:00 PM MST

Closing Plenary



The conference culminates with our annual awards luncheon and a closing plenary offering multiple perspectives on the conference theme: *Educating for Change*. The plenary will feature a series of thought-provoking flash talks, including a number of our EE 30 Under 30 inspirational young leaders at the forefront of positive change worldwide.



Everyone Is Welcome!

NAAEE is committed to advancing equity and inclusion in the field of environmental education. Throughout the conference, we will be focusing on justice, equity, inclusion, and sustainability in our plenary sessions and several workshops. In addition, at least 15 percent of our concurrent sessions will explore strategies and programs that help diversify our audiences as well as our workforce, build cultural competence, support environmental justice, engage with new audiences, forge new and lasting partnerships, honor traditional knowledge, and increase our reach and relevance throughout society. Affinity groups including the Environmental Professionals of Color (EPOC) and the Queer Environmental Educators Network (QEEN) will also be meeting.



19th Annual Research Symposium

OCT. 11–12

NAAEE's annual Research Symposium brings together new and experienced researchers from around the globe to explore the current state and future directions of environmental education research and advance the use of practices proven to be effective. The symposium fosters discussion and collaboration among members of the EE research field, including researchers, policymakers, and practitioners at all stages of their careers. Participants can meet with colleagues and mentors to discuss publishing and career advice, and issues and concerns in the world of research.

Reflecting the general theme—educating for change, sessions will promote dialogue as we confront myriad challenges ranging from climate change to environmental, economic, and racial injustices. Panels, roundtable discussions, workshops, and posters reflect both methods and theory, and pedagogy and programming.

Featured Speakers

All featured speakers will be live-streamed and accessible by both in-person and virtual conference participants. Plenary sessions will be recorded and available for on-demand viewing for two weeks after the presentation.

Arizona does not observe Daylight Saving Time and will be on Mountain Standard Time during the conference.

Tuesday, October 11, 9:00 AM MST



Dr. Alberto Arenas

University of Arizona College of Education

Alberto Arenas is a professor of environmental and sustainability education in the Department of Teaching, Learning, and Sociocultural Studies in the College of Education at the University of Arizona.

He specializes in the connections between pedagogy and environmental sustainability; experiential education, with an emphasis on vocational education; and the decolonization of education with a focus on restoring culturally-rich, non-commodified knowledge and skills.

Dr. Arenas is editor-in-chief of the *Journal of Environmental Education*, a premier educational journal and the oldest journal on environmental education worldwide in continuous operation. His publications have appeared in leading educational journals, including *Phi Delta Kappan*, *Teachers College Record*, *Compare*, the *International Review of Education*, and the *Journal of Environmental Education*. He received his PhD in sociocultural studies in education from the University of California, Berkeley and joined the University of Arizona College of Education faculty in 2002.

From 2009–2019, he was co-director of the Study of the United States Institute, which invited Indigenous Latin American college students to the University of Arizona to explore sustainability issues. He has also served as a member of the Scientific Committees of the World Environmental Education Congresses in Morocco and Sweden and was a Fulbright Scholar researching Mexico's environmental education programs.

Tuesday, October 11, 12:00 PM MST



Dr. Viniece Jennings

Agnes Scott College, Decatur, Georgia

Dr. Viniece Jennings is a purpose-driven scholar, educator, and environmental professional. Her research often explores urban green spaces and health in the context of ecosystem services,

environmental justice, and social cohesion. She led research on green space, health disparities, and social determinants of health across the U.S. that was recognized as top research for practice by the National Recreation and Parks Association. Her publications appear in journals such as *Nature Communications*, the *American Journal of Preventive Medicine*, *PLOS One*, *Environmental Justice*, and the *International Journal of Environmental Research and Public Health*. Her expertise is featured in outlets such as *Atlanta Magazine*, *Live Happy Magazine*, Georgia Public Broadcasting, and Shondaland Digital Media. She serves as an assistant professor in the Department of Public Health at Agnes Scott College. Dr. Jennings is a JPB Environmental Health Fellow at the T.H. Chan School of Public Health at Harvard University. She has over a decade of experience serving as a research scientist with the federal government. Prior to her role at USDA, Jennings interned at the White House Council on Environmental Quality for the Obama Administration. She holds a doctorate in environmental science from Florida A&M University and a BS from Delaware State University.

19th Annual Research Symposium | Tuesday, October 11 and Wednesday, October 12

Closing Plenary

Wednesday, October 12, 5:00 PM MST

The Research Symposium will close with reflections from the 2022 Research Award recipient and the symposium co-chairs.

Note: The Research Symposium requires a separate registration fee.

Arizona does not observe Daylight Saving Time and will be on Mountain Standard Time during the conference. Session times are subject to change.



Special Events

New!

Research Symposium Awards Reception and Recruitment Fair

New this year, we will hold a recruitment fair concurrent with the annual awards reception. Graduate programs and employers will share recruitment materials, and prospective graduate students and job seekers can learn about opportunities and bring their CVs. (This event is included with in-person Research Symposium registration.)

Pre-Research Symposium Networking Opportunities

For more information and pricing, visit conference.naaee.org.

Sabino Canyon Field Trip

Monday, October 10, 1:00 PM–4:30 PM MST



Catch up with colleagues and meet new ones during this visit to Coronado National Forest's Sabino Canyon Recreation Area, one of Southern Arizona's premier natural areas, located at the base of the Santa Catalina Mountains. After an introduction by a Pima County Master Naturalist, participants can either join a two-hour guided hike through the canyon or explore the visitor center and take short walks nearby. There is also an option to take a one-hour interpretive tram ride to the top of the mountain. Transportation to Sabino Canyon and entry fees are included; the optional tram is not included and is an additional \$15.

Research Networking Dinner

Monday, October 10, 6:30–8:30 PM MST

Join other research symposium attendees for food, fun, and conversation at Azul Restaurant and Lounge at the Westin La Paloma. Co-chairs Kathryn Stevenson and Scott Morrison will be there to welcome everyone and kick off two days of learning, sharing, and community-building. Diners will choose from a special limited menu that includes vegetarian and vegan entrees. The price includes dinner, tax, and gratuity. Alcoholic beverages are not included.



About NAAEE

For five decades, NAAEE has served as the professional association, champion, and backbone organization for the field of environmental education. Dedicated to strengthening the field, we bring people together to accelerate environmental literacy and civic engagement through the power of education to create a more just, equitable, and sustainable future for all.

NAAEE's influence stretches across North America and around the world, with members in more than 30 countries. NAAEE and its 54 state, provincial, and regional Affiliate organizations in the United States, Canada, and Mexico have more than 20,000 members. Our members are professionals working across business, government, higher education, formal (K-12) education, nonformal education, early childhood education, science and STEM education, philanthropy, and other sectors of society.

NAAEE also oversees the Natural Start Alliance, focused on early childhood environmental education; serves as the Secretariat of the Global Environmental Education Partnership (GEEP), in partnership with U.S. EPA and EPA Taiwan; leads the ee360+ initiative to strengthen the EE field and support professional development through a cooperative agreement with U.S. EPA; and, in partnership with NOAA, leads the eeBLUE program to build capacity for environmental literacy.

NAAEE
1250 24th Street NW, Suite 801, Washington, DC 20037
naaee.org

Join us in thanking our incredible Conference and Research Symposium Chairs!



LoriAnne Barnett Warren
Arizona Department
of Forestry and
Fire Management
Arizona Association for
Environmental Education
Conference Chair



Kathryn Stevenson
North Carolina State
University
*Research Symposium
Co-Chair*



Scott Morrison
Elon University
*Research Symposium
Co-Chair*



Want to Volunteer?

Attendees can save \$200 off full in-person conference registration by volunteering for eight hours over the course of the conference. Interested? Contact us at conference@naaee.org. Volunteer registration opens in late July; watch our website and social media for an announcement.



Scholarship Opportunities

NAAEE will announce several scholarship opportunities in late July; watch our website and social media for more information.

Pre-Conference Field Trips

Visit conference.naaee.org for detailed field trip descriptions and prices. All trips depart from the lobby entrance to the Westin La Paloma.

Wednesday, October 12



Arizona-Sonora Desert Museum

8:00 AM–3:30 PM MST

The Arizona-Sonora Desert Museum has been rated as one of the country's top 10 zoos, botanical gardens, and museums in visitor polls over the last decade! You'll have a personalized experience at the museum, including a greeting and introduction, with time to tour on your own, visit the Packrat Playhouse (play and learning space), touch a stingray (extra \$3 fee), and chat with museum docents. We'll break up the morning with a custom animal presentation that includes an overview of museum education programs and Q&A with museum education staff. Transportation, entry fees, and lunch are included.



Saguaro National Park

8:00 AM–2:30 PM MST

Join the National Park Service and some of its community partners for a morning of learning and exploration at Saguaro National Park's Tucson Mountain (West) District. Learn about the park's natural and cultural resources—including breathtaking views of the Tucson Mountains and impressive displays of the iconic giant saguaro—as well as some of the work NPS and others are doing to equitably engage Tucson's underrepresented community. This trip will entail moderate walking. Wear close-toed shoes and bring water and appropriate sun protection. Transportation to the park, entry fees, and lunch are included.



Sky Islands Exploration

8:00 AM–4:00 PM MST

The Santa Catalina Mountains, part of the Madrean Sky Islands, offer a unique opportunity to experience one of the world's most biodiverse regions. Along a 25-mile stretch of road climbing over 6,500 feet in elevation, you'll travel through life zones like that of Mexico to Canada. You'll participate in activities used regularly with K-12 students to learn about and engage in a variety of environments within this section of the Coronado National Forest. Transportation and lunch are included.



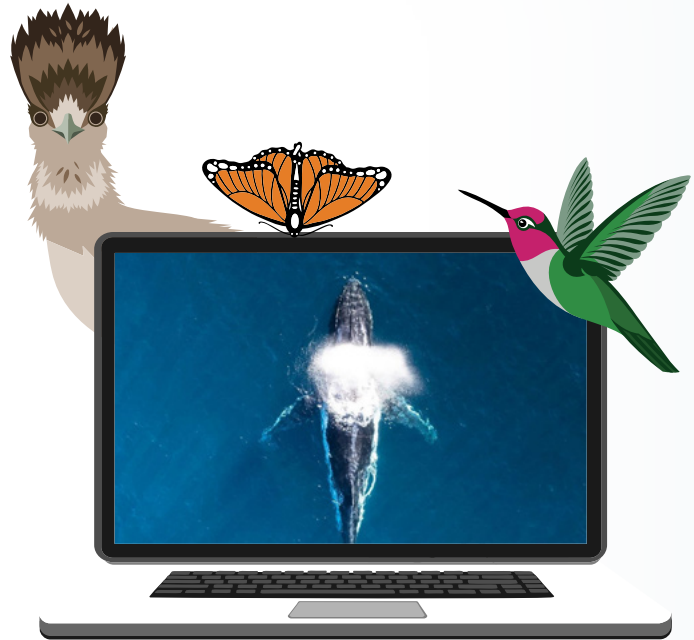
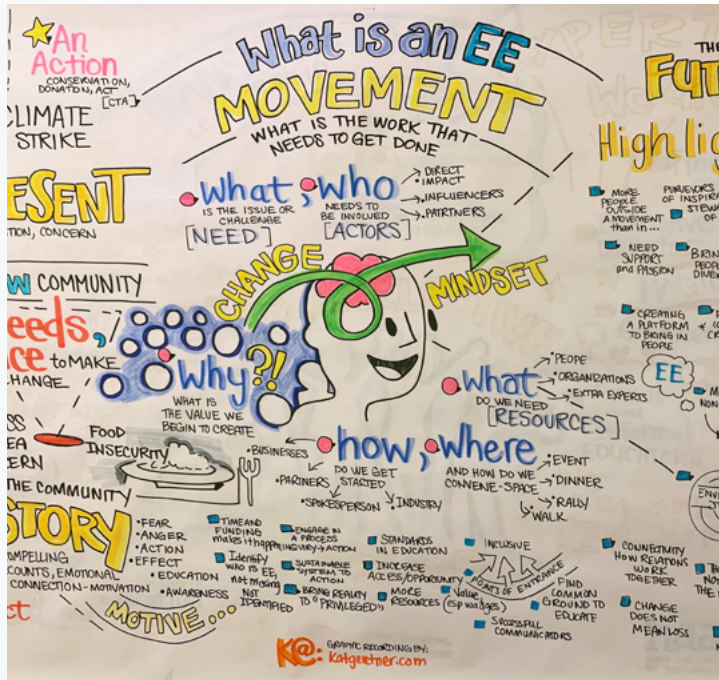
Chuk-Son Trail

1:00 PM–4:30 PM MST

The Chuk-son Trail is an urban, guided, interpretive walk perfect for exploring Tucson's rich culture, ecology, and communities of the past and present. It highlights all that makes Sonoran Desert living so fascinating! Learn about Tucson's wildlife, plants, architecture, murals, traditional foods, shrines, and local characters and stories on this 2.6-mile exploratory walk. Youth Ambassadors from the Ironwood Tree Experience will lead the walk and share place-based stories of the culture and ecology of downtown Tucson's historical barrios, arroyos, and alleyways. Transportation is included.

Pre-Conference Workshops

Visit conference@naaee.org for workshop descriptions and prices for in-person and virtual workshops.



In-Person Workshops

Wednesday, October 12

Full-Day Workshops

8:30 AM–4:30 PM MST

- NAAEE Affiliates Workshop
- Community-Centered EE: NAAEE *Community Engagement Guidelines* Leaders' Workshop

Morning Workshops

8:30 AM–12:00 PM MST

- Engaging Classrooms in Environmental Data and Community Science with FieldScope
- Advancing Civics in Environmental Education

Afternoon Workshops

1:00 PM–4:30 PM MST

- Nurturing, Educating, Connecting: A Tour of Manzo Elementary's School Gardens
- The Road to NAAEE Higher Education Accreditation: A Map for Success
- Engaging Youth Groups in Community Action Projects for the Environment

Virtual Workshops

Thursday, October 6

9:30 AM–1:00 PM MST

- Building Capacity for Justice-Centered Climate Change Education
- Nature-Based Charter Schools to Increase the Accessibility of Environmental Education
- Ocean Literacy and E-STEM to Empower Youth in Climate Action

Friday, October 7

9:30 AM–1:00 PM MST

- How to Teach Climate Change Effectively
- Re-Storying, Gamifying, and Reconciling Environmental Education for a Regenerative Future

Monday, October 10

9:30 AM–1:00 PM MST

- Know Your Audience: Empowering Effective Climate Change Communicators
- Thrive Naturally

Conference Opportunities

Wednesday, October 12
5:00 PM–6:00 PM MST

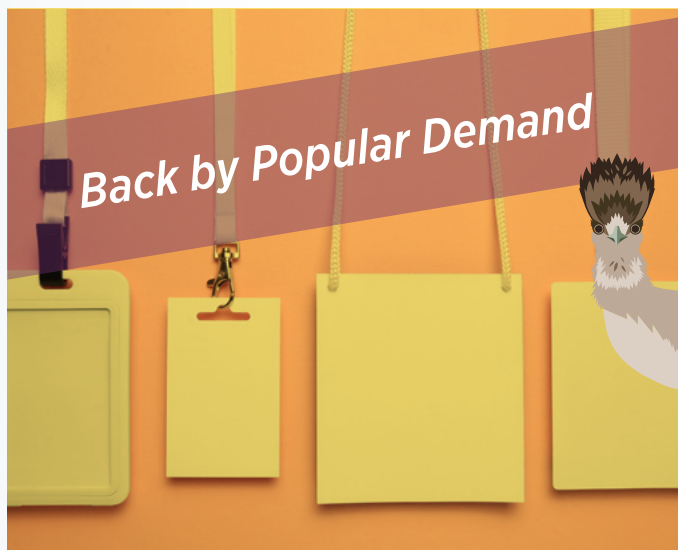
To participate as an exhibitor, purchase your table through conference registration. Attendees do not need to register for these events, which are included with registration.

Share Fair

At the Share Fair, nonprofit organizations can highlight their successful programs and inspiring ideas through tabletop displays and engaging conversations. This event will be held during the opening reception on Wednesday evening from 5:00 PM to 6:00 PM. Purchase your table through the conference registration system by the September 1 early bird deadline to be listed in the conference program.

Authors' Corner

Would you like to share your latest works with conference participants? Authors can interact with conference attendees and promote, sign, and sell their publications in the Authors' Corner. This event will be held during the opening reception on Wednesday evening from 5:00 PM to 6:00 PM. Purchase your table through the conference registration system by the September 1 early bird deadline to be listed in the conference program.



Featured Activities

- Exhibit Festival
- Evaluation Clinic
- Fundraising Roundtables (virtual)
- Skill-building sessions for young professionals

Networking Events

Thursday, October 13
5:00 PM–6:00 PM MST

Enjoy Tucson

NAAEE will run free continuous shuttle buses between the Westin La Paloma and the Historic Mercado San Augustin district in downtown Tucson from 6:30 PM–10:30 PM so that attendees can enjoy downtown Tucson during this open evening. The Mercado and the MSA Annex offer an array of shops, food, and beverages to enjoy; the conference program will list restaurants offering discounts to conference attendees. You can easily ride the Tucson Street Car from the Mercado along Congress Avenue and 4th Avenue to visit popular restaurants, breweries, ice cream shops, and the Historic Congress Hotel.



Friday, October 14
7:00 PM–9:30 PM MST

Chillin' at the Chul

Get into the Southwestern spirit and celebrate the closing evening of the conference as we "Chill at the Chul." Deemed one of the world's ten best botanical gardens, Tohono Chul is Tucson's charming crossroads of nature, art, and culture. Set on 49 acres of lush desert, Tohono Chul's winding pathways, art, and garden exhibits reveal the unique qualities of the Sonoran region. Join with colleagues to enjoy Peruvian and Latin American music by Tucson-based band "Tradiciones," the flavors of regionally inspired hors d'oeuvres and beverages, amazing views of the Santa Catalina mountains, and chance encounters with resident hummingbirds.



Conference Venue



Westin La Paloma Resort

3800 E. Sunrise Drive
 Tucson, AZ 85718
 Reservations: bit.ly/NAAEE2022Hotel
 (520) 577-5854

Housing

NAAEE holds a room block at the **Westin La Paloma at a special group rate**. Please help us meet our commitment by reserving your room at the Westin.

The hotel is a beautiful walking campus, with outward facing rooms. Check our website for information on sustainability practices. All sessions will be held at the venue.

For special conference pricing, you must **book by September 15, 2022**. The Westin strongly recommends making your reservation online, but you can also call their group reservation coordinator. There is more information on the conference website.

Room blocks are limited; we recommend booking early.

Covid Protocols

We care deeply about the safety of our attendees, and we are committed to taking appropriate precautions designed to promote the health and wellness of conference attendees. Attendees must agree to follow any COVID-related or other health and safety protocols at our events.

Our COVID-19 policy is posted on the conference website. We will implement the specific health and safety protocols appropriate to the public health circumstances at the time of the conference.

**THANK YOU TO OUR
2022 SPONSORS**

